

pacific daily

your guide to what's on

P&O

This is how to holiday

PACIFIC SUN

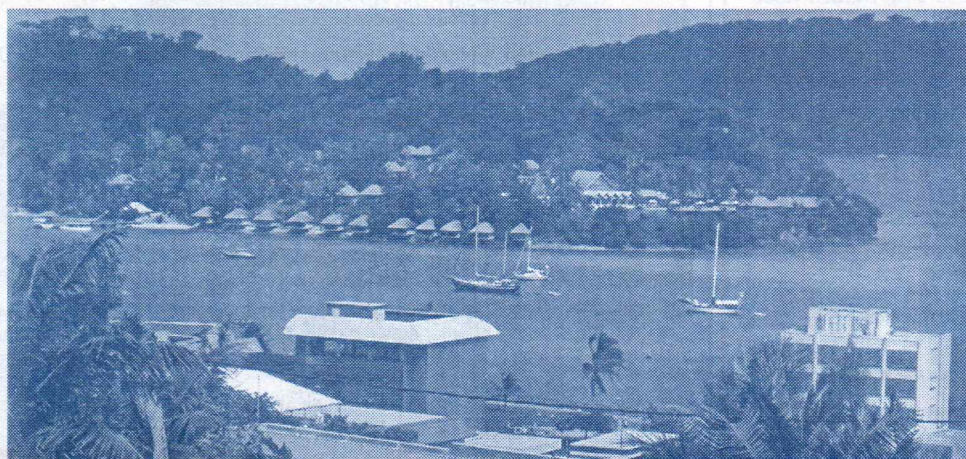
PORT VILA, VANUATU

TONIGHT'S DRESS:

WEDNESDAY, 19TH NOVEMBER, 2008

SUNRISE: 5:04AM - SUNSET: 6:00PM

SMART CASUAL/ISLAND NIGHT



Vanuatu is comprised of 82 islands with a population of 182,000. Port Vila is situated on Efate Island and is a charmingly quaint colonial style town situated on a picturesque harbour. Port Vila is a small township, whose inhabitants are extremely friendly. If you like to speak French, half the population will oblige; the other half speak English. To communicate with each other, Pigeon or Bislama is the Linga Franca. In 1906, when the Germans seemed to be dominating too much of the South Pacific for the comfort of both the British and French, an agreement to hoist flags and run the place jointly came to pass. A condominium resulted with two languages, two police forces, two jails etc. During the war, Port Vila hosted the US Navy who built airfields, roads and hospitals. Today most of the British have gone, however, many French have remained since independence.

DRINKING ASHORE IN VANUATU

In the past there have been instances where some passengers have returned to the vessel intoxicated. In retrospect, it was obvious that they were much worse than they should have been in relation to the alcohol they had consumed ashore and had medical attention not been available, it is possible that they could have lost their lives. We strongly advise you to avoid drinking any form of alcohol that could have been "spiked", especially the well known Kava liquor. **DO NOT UNDER ANY CIRCUMSTANCES DRINK HOME MADE KAVA. THIS IS THE ONE DRINK THAT IS REGULARLY "SPIKED".** Please be aware that after drinking "spiked" Kava you may experience some unpleasant side effects.

MINISTRY OF AGRICULTURE AND FORESTRY IMPORTANT NOTICE

As is customary in most South Pacific Islands, we are required to remind all our passengers of the quarantine regulations. It is strictly forbidden to take ashore any food, fruit, meat, packed lunches, flowers, plants or animals from the ship. We remind you that severe penalties do exist for breaches of quarantine law. Random spot checks will be performed at the Gangway by a Quarantine Officer. Your cooperation will be greatly appreciated. If anyone is caught removing such items from the ship into Vanuatu Territory they WILL be subject to a large on the spot fine at their own expense.

THE OASIS

This "Pocket of Tranquility" has limited space available, for adults only and is on a first come first basis. A nominal fee of AUD\$10.00 for a half day pass or AUD\$15.00 for full day pass.
Passes: 9:00am-1:00pm & 1:30pm-5:30pm.

The fee includes use of towel complimentary large bottle of water, unlimited NZ Ice Cream, unlimited hot non-alcoholic beverages, magazines available for your reading.

FROM THE NAVIGATOR

During the night the Pacific Sun will maintained a Westerly course heading towards Efate Island. Early in the morning, after rounding Pango Point, we will enter Mele Bay and commence our final approach to the Main Wharf where we expect to be safely alongside at 08:00 hours in the morning. Captain James Cook named this island, Sandwich Island, in 1774, after Lord Sandwich, the British patron of his voyage. However, the islanders own name for it is Efate, which is pronounced "ef-art-ay". Efate has two of Vanuatu's best deep water anchorages (Vila Bay and Havannah Harbour) as well as the principal airport of Vanuatu's largest town, Port Vila. Pacific Sun will depart her berth at 5:00 pm and once clear of Vila Bay set westerly courses heading back towards Brisbane, Queensland.

CURRENCY FOR VANUATU

The Purser's Desk does not sell, buy or exchange Vanuatu Currency (Vatu). Australian Dollars are accepted ashore. Please be advised that all credit card transactions made ashore will be charged in local currency and that Bankcard is not accepted in Vanuatu.

CAUTION:

"Blow-Dart" Tubes, available for sale in this port, are BANNED in Australia. Any attempt to land such items in Brisbane will therefore be strictly dealt with by Australian Customs.

IMPORTANT NOTICE

All passengers are strongly advised to check wooden carvings and artifacts prior to purchase, as it is recommended not to buy wooden items with small holes, feathers and cut or dried flowers. Additionally, be aware of claims such as **"treated for export, fumigated, or government inspected"** stickers as most of these items would not meet AQIS.

DUTY FREE LIQUOR SALES

Duty Free Liquor purchased in any of the recognized Duty Free Stores in Vila will be delivered directly to Pacific Sun prior to her departure. This requirement is in the interest of security and will help to alleviate long lines at the gangway. For your convenience, you will be given a receipt for your purchase and this receipt should be kept as proof of purchase. Duty free Liquor purchased will be delivered to your cabin on the last day of the cruise. Cigarettes and other goods must be carried back by the individual from the stores, otherwise they will not be available until the last day of the cruise.

PACIFIC SUN



P&O OVERSEAS TELEVISION

7:00am-11:00am - Channel 26 Morning TV Show with Cruise Director Adam & special guests, for a light hearted way to start your morning.
 11:00am-8:00pm - Channel 26 Reflections Updates
 8:00pm-Onwards - Channel 26 Movie: Wall-E
 Channel 36 all day Lotus Spa/Salon & Art Auction Video

ISLAND DISCOVERIES SHORE EXCURSIONS

Shore Tour Office: Main Deck 5, Midships
 Today's Hours: 4:00pm - 6:00pm

WHEN & WHERE TO MEET FOR TODAY'S TOURS:

Today in Port Vila there are TWO DIFFERENT meeting locations on the dockside ashore! READ YOUR TOUR TICKET to know where you must meet today!
 TO THE RIGHT of the gangway, end of pier, by the BLUE TENT - The majority of tours will meet here.
 -OR-

TO THE LEFT of the gangway, by the entrance of craft market.

"CHILDREN WILL NOT BE ALLOWED ON TOUR WITHOUT THEIR PARENT OR GUARDIAN WITH THEM AT ALL TIMES!"

Remember to bring your Tour Tickets! NO ANNOUNCEMENTS WILL BE MADE FOR TOUR DEPARTURES Please meet only 10 minutes prior to the departure time. Please be advised there is limited shade or seating ashore! Don't forget your bottle of water.

DUE TO THE UNEVEN NATURE OF THE DOCK PLEASE EXERCISE CAUTION WHILE PROCEEDING ASHORE.

8:00am PACIFIC SUN IS EXPECTED TO ARRIVE AT (Approx.) PORT VILA, VANUATU

GOING ASHORE

In these times of higher security consciousness we recommend you take the following precautions when ashore in relation to your personal safety and that of your belongings. Be street wise and aware to your surroundings. Do not venture off the beaten track alone. Keep money and valuables out of sight. Be aware of pickpockets. Dress modestly. Do not draw attention to yourself.

SHIP'S SECURITY NOTICE

In order to prevent unauthorized persons boarding the ship, you are asked to carry your "Cruise Card" with you when going ashore. You will be asked to produce this at the gangway when you leave and return to the ship. Please ensure that you also have a picture ID with you before leaving the ship, as you may be required to show this at security checkpoints upon your return. Please be aware that we have established a secure area around the vessel and our security procedures require that you must be prepared to show your cruise card when entering this area, in addition to showing it to the Security Staff at the gangway when leaving or boarding the ship. We kindly ask you not to accept and bring on board any parcels or packages from strangers. Before boarding the ship, you may also be asked by our Security Staff to open parcels or handbags which you are carrying. We are sure that you will appreciate that this security is in the best interest of all concerned.

4:00PM-7:00PM - LIDO POOL, DECK 10

Grab your Leis, Grass Skirts, and Hawaiian shirts ready for Island Night

8:00am-11:00am Pacific Sun Aqua Hut - Open for hire of Snorkel Equipment, Adults \$39.95, Children \$29.95 plus a \$20 deposit for the cruise. Slip Slap 4:00pm-5:00pm Slap.....grab your Sun screen and sun hats from the Aqua Hut
 Lido Pool, Deck 10 Aft



Denotes a family activity.
 Children must be under direct parental supervision



- 9:00am & Deck Quoits - Meet your fellow passengers for a game. (Unhosted) *Deck 11 Starboardside*
- 10:00am & Table Tennis - Staying onboard? Have a game with each other. (Unhosted) *Deck 9 Aft*
- 10am-11am Library is open for the borrowing of Books - Meet Your Cruise Director's Staff. *Churchill's Library, Deck 8 Forward*
- 3pm-4pm
- 10am-11am Card & Board Games - You name it, we'll play it. Join Nick for introductions and a friendly game. *Churchill's Library, Deck 8 Fwd*
- 11:30am & Morning Quiz - Another mental mindfield with Nick. *Terraces Lounge, Deck 9 Aft*
- 11:30am & Shuffleboard - Enjoy a game with your fellow passengers. (Unhosted) *Deck 11 Starboardside*
- 12:30pm Golf Chipping - Are you the next Tiger Woods. Hosted by DJ Dave. *Deck 10 Poolside*


AFTERNOON BIG SCREEN MOVIE

2:00pm - Terraces Lounge, Deck 9 Aft
MADE OF HONOR

Starring: Patrick Dempsey, Michelle Monaghan
 & Sydney Pollack
 Rated PG-13; 1 hour 41 minutes

- 2:00pm Landscape Drawing - Capture the magnificence of Port Vila and show off your drawing skills. Alex provides the equipment in the Gazebo. (Not a drawing lesson) *Promenade Bar, Deck 9 Fwd*
- 3:00pm 500 Get Together - Calling all 500 players. See if you can play your cards right & win a prize. Alex gets you started. *Smuggler's Bar, Deck 9 Midship*
- 3:30pm Deck Quoits - Are you ready for another challenge? (Unhosted) *Deck 11 Starboardside*

Deck 10 Fwd, Poolside
 4:00pm to 6:00pm - DJ DAVE

- 4pm-7pm Island Night Table *Lido Pool, Deck 10 Forward*
- 4:00pm Word Games: Famous Pairs - Test your pairing ability with Emma. *Legends Bar, Deck 9 Midship*
- 4:00pm & Nintendo Wii "Bocce Ball" Challenge - See if you got the hand to eye coordination with Jack. *Smuggler's Bar, Deck 9 Midship*
- 4:15pm  Island Dance Class - Come learn the Nutbush, Agadoo, Electric Slide and be a professional tonight with Rachard. *Lido Deck 10 Forward, Poolside*
- 4:30pm Doubles Table Tennis - Alex will team you up and find the champions. *Deck 9 Aft*

**4:30pm - ALL PASSENGERS ABOARD PLEASE!
 PACIFIC SUN SAILS FOR BRISBANE**

- 4:30pm Afternoon Quiz - Test your brains with Nick. *Terraces Lounge, Deck 9 Aft*

4:45pm - AUSSIE/KIWI SURVIVAL CHALLENGE FINAL
 Marie invites back our top 6 passengers, who managed to out smart, outwit & outplay each other. Today we will find our number 1 survivor.
Deck 10 Forward, Poolside

- 5:00pm Hibiscus Making - Stef & Jack will teach you how to make a Hibiscus flower. *Smuggler's Bar, Deck 9 Midship*
- 5:15pm & Sarong Tying - Learn a few different ways to wear your Sarong to tonight's Island Night Party. Hosted by Emma & Jon along with special guest models. *Lido Deck 10 Forward, Poolside*
- 5:15pm & Sports Trivia - Hannah asks the questions. *Legends Bar, Deck 9 Midship*

TONIGHT'S ENTERTAINMENT

ATLANTIS LOUNGE DECKS 8 & 9 FWD

6:00pm-6:25pm & 7:45pm-8:10pm

Listen or Dance
to the Sounds of
Pacific Sun Showband

SHOW TIMES:
6:30PM - 2ND SITTING
8:15PM - 1ST SITTING

P&O CRUISES PROUDLY PRESENTS

Celebrity Showtime

Starring:

The
"Dynamic Vocal Stylings"
of

**Janine
Reed**

M.C. Cruise Director:
ADAM GODÉR

Production Manager: ROMEO BUCO
Music By: PACIFIC SUN SHOWBAND

No Videotaping of performances due to copyright regulations.
As a courtesy to others, we do ask guests not to reserve seats.
We kindly remind our guests that children under the age of 13 are not permitted in the Atlantis Lounge after 6:30pm unless accompanied by an adult. Also as a courtesy, we ask that children do not sit in the front two rows even if accompanied by an adult.
SITTING IN THE AISLES & STAIRWAYS IS NOT PERMITTED.

SMUGGLER'S BAR, DECK 9 MIDSHIP

Enjoy the sounds of our
Nightlife Video Jukebox

DECKS 10 & 11 FORWARD

7:15pm to 8:00pm

Relax to the Rhythm and Beat of

KRYPTONITE

9:15pm - Onwards

**Island
Night
Deck
Party**



Boogie under the stars with Cruise Director Adam,
your Cruise Director's Staff & the Pacific Sun
Entertainers. Wear your Island Gear.

Enjoy the Sounds of

Kryptonite & DJ Dave
(Weather Permitting)

Island Night Cocktail Special

Tropical Rum Punch

Dark Rum, Pineapple Juice & Orange Juice - \$6.75

TERRACES LOUNGE, DECK 9 AFT

5:00pm-5:45pm

Strictly Ballroom

Merengue, Swing, Salsa, Tango, Cha-Cha, Waltz, Rhumba.
Whether you're an aspiring Fred & Ginger or you just want
to trip the light fantastic. The floor is yours!

8:15pm - 10:00pm

FAMILY KARAOKE

Join your Youth Team and be the Star that you are.

We kindly remind our guests no drinking on the dance floor.
Footwear must be worn at all times.

**TERRACES LOUNGE
WILL BE CLOSED AT 10:00pm**

SPEAK EASY LOUNGE, DECK 8 FWD

5:00pm-5:45pm, 6:00pm-6:45pm, 7:15pm-8:30pm & 9:15pm-10:30pm

JEFF SMITH

Entertains you on the Baby Grand.



IMPORTANT NOTICE: PASSENGERS UNDER 18 YEARS WILL NOT BE SERVED ALCOHOLIC BEVERAGES NOR ARE THEY TO CONSUME ALCOHOLIC BEVERAGES. PLEASE UNDERSTAND THAT YOU MAY BE REQUESTED TO SHOW PHOTO IDENTIFICATION ALSO INDICATING YOUR DATE OF BIRTH.

"EVERYTHING CAN BE SAID WITH FLOWERS"

Visit Edgar for all your beautiful fresh flower arrangements, corsages and boutonnieres. From 3:00pm to 6:00pm, outside the Casino, Deck 9 forward starboardside. Order forms are also available at the Purser's Desk, Deck 5.

PACIFIC SUN DUTY FREE

Located on Deck 8 Forward Shops Hours: Sailing to 11:00pm
Sun Shop: 8am - 12noon & 4pm - 11pm

LAST CHANCE TO ORDER LIQUOR & TOBACCO

Save Up To 50% Off Suggested Australian RRP
Sailing- 11pm Sun Shop, Deck 8 Forward

ISLAND NIGHT TONIGHT

Island Shirts Only \$21.95
Choose from a selection of Island Gear!
Sun Shop 8am - 12noon & 4pm - 7pm, Lido Pool Deck 10

TAX AND DUTY FREE SWAROVSKI AT SEA

Fine Austrian Crystal Gifts & Jewelry
Guaranteed Savings of Up to 30% on Australian RRP
Spend \$300 or More and Receive 15% OFF
Sailing - 10:30pm, Tivoli Square, Deck 9

50% OFF FINE JEWELRY SALE TOMORROW

9am - 9pm, Pacific Boutique, Deck 8

P&O GUARANTEE

We Will Match The Price On Any Identical Item in port!
Using the exchange rate available to us onboard for Vila products.



BARS AND BEVERAGE NEWS

COCKTAIL OF THE DAY

ILLUSION

Midori, Cointreau, Vodka & Pineapple Juice - \$7.75

PACIFIC SUN BLOODY MARY CLUB

Calling all early risers. Enjoy a Bloody Mary in The Legends Bar and Outback Bar
Between 10:00am to 12:00 Noon - \$6.75

WINE LINE

PRE ORDER YOUR DINNER WINE BY DIALING 8888

RESPONSIBLE SERVICE OF ALCOHOL

In accordance with this policy, "Pacific Sun" will NOT serve alcohol to persons who are: * Behaving in a disorderly manner * Supplying or purchasing alcohol for a person under 18
Passengers under 18 years will NOT be served alcoholic beverages nor are they to consume alcoholic beverages. Please understand that you may be requested to show photo identification indicating your date of birth. In the best interest of all, it is important and appreciated that ALL passengers abide by the policy, which ultimately ensures the safety and enjoyment of everyone onboard. Thank you for your co-operation and understanding.

SPEAKEASY BAR "Martini Zone" Deck 8 Midship

Try our Excellent Martini Selection
Today's Recommended Martini is:

"BROWN VELVET"

Crepe de Cacao Dark, Triple Sec & Cream - \$8.75

FINE ARTS

TOMORROW IS THE BIG DAY!

Tomorrow is the Final Auction and you will want to come early for this one.

When you see a framed piece come up... you get a brand new frame from P&O Fine Arts.

We ship right to your door and the insurance is included in the shipping. You will see a lot more competitive bidding tomorrow at the Final Auction.

Meet Degas your Art Director in the Art Gallery on deck 9
from 7:30pm to 8:30pm for any questions and concerns.

PACIFIC SUN PHOTO/VIDEO GALLERY

Open from 5:00pm to 10:30pm

Modern, Fun Family Portraits

Come and enjoy the chance to get a fun, relaxed portrait session.

Not to be missed!!

6:30-10:30pm

Deck 9 Forward-Outside the Casino

WE STOCK OLYMPUS DIGITAL CAMERAS ALL AT TAX & DUTY FREE PRICES

BUY 3 PORTRAITS AND GET THE 4TH FREE!!

CUSTOM CANVAS ENLARGEMENTS & FRAMING

Order your Canvas Enlargement and receive your original portrait for FREE!

Prices starting as low as \$99.95.

Our Platinum Collection Series offers 10% discount on selected sizes.

Daily updates for the Reflections DVD are available
in the Photo/Video Gallery and Channel 26 on your stateroom TV.

PACIFIC SUN CASINO

Slot Machines: Open from 6:00pm until late Located on Deck 9 Midship
Gaming Tables: Open from 6:00pm until late

\$200 Three Card Poker TOURNAMENT

Qualifying Rounds 8pm - 11pm.

Final at 11:15pm. Only \$10 to enter.

GO WILD IN OUR TOURNAMENTS!

Every entry has a chance to win a free seat in the final!

PONTON NIGHT

Blackjack with some extra bonuses for better payouts.
From 9pm this evening.

Please note that the minimum age for anyone allowed in the casino is 18. Photo ID will be required. For your convenience you may charge your Casino chips or Slot tokens to your shipboard account upon registration of a valid credit card at the Purser's Office (Up to \$1,500 per day, \$5000 per cruise) A 3% Surcharge will be added. Cigar, pipe smoking or chewing tobacco is not permitted in the Casino.

LOTUS HEALTH AND BEAUTY SPA

Lotus Spa on Deck 11 Forward, Please phone 1980 for appointments.

Beauty Salon on Deck 8 Forward, Please phone 1830 for appointments.

Gymnasium located on Deck 11 Aft

Open 8:00am - 10:00pm

Open 8:00am - 8:00pm

Open 7:00am - 10:00pm

SPA MANAGER'S FAVORITE

Your special ritual begins with a full body Exotic Lime and Ginger Salt Exfoliation to polish your skin to perfection, smoothing away dryness.

Followed by a luxurious Back of the Body Massage concentrating on your main areas of concern. It is then completed with an invigorating European Booster Facial to re-hydrate and boost your skin. Perfect Pampering!
60-mins FOR ONLY \$119 (save \$40)

PICK 'N' MIX

Choose any 3 of the following:

- *Frangipani Scalp Massage
- *Conditioning Hair Treatment
- *Repolish (hands or feet)
- *Foot & Ankle Massage
- *Hand & Arm Massage

\$79



EXOTIC HAND & SCALP RITUAL

Hand and Arm exfoliation using Exotic Lime & Ginger Salt to soften & remove dry skin, followed with a paraffin wax mask to nourish. Relax while you receive a 30-min scalp, neck and shoulder massage to ease away tension.

45-mins \$89 (save \$40)



PLEASE PROVIDE 24 HOURS NOTICE FOR CANCELLATION OF ANY APPOINTMENTS TO AVOID A 50% CHARGE ON THE SERVICE.