

THE  
LODGE  
discover. huddle. play. create.

onboard activities for **bigger kids**

## for ages 8-12

Welcome to The Lodge! Unleash your explorers into the great indoors with unique experiences in their very own outdoors-themed habitat, created with Discovery Communications.

At Camp Discovery, they'll test their knowledge of space with our Discovery at Sea Trivia Challenge. They will learn about sharks and the solar system with our California Science Center activities.

Let's see what we can discover together!

Our programs are designed for specific age groups. To ensure the safety and security of every participant, it's our policy that only those within that age range can take part in the activities for their group.

### MAJESTIC PRINCESS YOUTH TEAM

Youth Activities Manager - Emily Valencia

Teen Activities Coordinator - Edilaine Cardoso

Youth Staff - Shiena, Katheryn, Valeta & Febbie



#### Youth Activities Manager

Emily Galolo Valencia

Emily hails from Isabela, Philippines. She holds a Bachelor's Degree in Science and majored in Psychology. Prior to joining Princess Cruises, she worked as Guidance Counselor in a private school for girls in

Manila. Emily also served as Teen Coordinator followed by her appointment as Youth Activities Manager in 2010. When she is not onboard organizing activities for young cruisers, Emily spends most of her time back home celebrating life with family and friends.

## MAJESTIC PRINCESS

Voyage #MJ8335

November 4-6, 2023

**Location:** Deck 17 AFT

Located between the Fitness Center & Platinum Studio

#### Phones:

Tree House:17603

Lodge:17604

Beach House:17605

#### Hours of Operation:

##### Embarkation Day:

Open House & Registration

12:00pm-4:00pm

Evening Activities

7:00pm-10:00pm

##### Sea Day

9:00am-12:00pm

2:00pm-5:00pm

7:00pm-10:00pm

Morning Activities

Afternoon Activities

Evening Activities

##### Port Day

Please let us know the day before if you are to attend the Port Day Programming. Please see more details inside the patten for Port Day Programming Hours.

\*Though we try to accommodate every child wishing to join the Youth Program, participation is not guaranteed during high volume cruises.

\*Activities, Hours & Venues are subject to change at any time.

\*Participation in physical activities is at passenger's own risk.



PRINCESS CRUISES

come back new®

# DISCOVER

# HUDOLE

## Nov 4 | Sydney

### Welcome Aboard

- 12:00pm- Open House & Registration
- 4:00pm All participants must be registered by a parent or guardian.

### Meet & Greet

- 7:00pm Meet & Greet
- 7:30pm Beaddie Lanyard
- 8:00pm Bracelets & Necklace
- 8:30pm Ice Breaker & House Rules
- 9:00pm Games: Nintendo Switch, PS4, Air hockey, Skee-ball
- 10:00pm Closed for the Night

## Nov 5 | At Sea

### Morning Activities

- 9:00am Card Games Galore!
- 9:30am Collapsible Water
- 10:00am Human Bingo
- 11:00am Bucket Hat Coloring
- 12:00pm Closed for Lunch

### Exciting Afternoon

- 2:00pm T-Shirt Coloring
- 3:00pm Airhockey Tournament
- 4:00pm Skee-ball Tournament
- 5:00pm Closed for Dinner

### Cowboy Night

- 7:00pm Cowboy Hats & Bandanas
- 8:00pm Horse Racing
- 8:30pm Games: Minefield & Zip Zap
- 9:00pm Most Wanted Person
- 10:00pm Closed for the Night

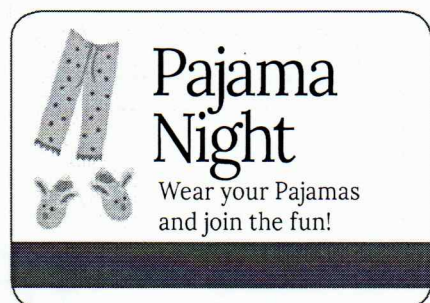
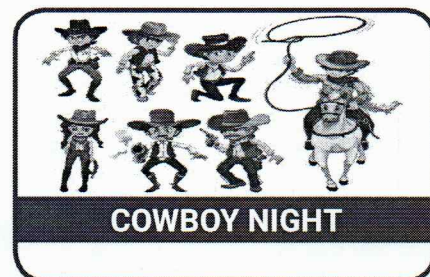
## Nov 6 | Eden

### Port Day Programming

- 8:00am-5:00pm
- Activities offered: Arts & Crafts, Board Games, Card Games, Nintendo Switch, Playstation, and Afternoon Movie(G/PG).

### Pajama Night

- 7:00pm Craft: Color Me Bag
- 7:30pm Game: Puzzle Competition
- 8:00pm Swap Seat or Musical Chair
- 8:20pm Movie: Cruisers' Choice
- 10:00pm Time to say Goodbye!!!



# PLAY CREATE

## Notice to Parents

- All participants must have a completed registration card to participate in the program.
- Sign in/out privilege for children ages 8-12 is not applicable while the ship is in port.
- Children with symptoms of an infectious illness must not be allowed in the youth center without written clearance from the ship's medical staff.
- Attending the program is complimentary. Charges apply on kid sitting (\$5/hour child) and lost or damaged pager (\$50)
- Evening Group Kid sitting 10:00pm-1:00am (10:00pm-12:00am on last day) Pre-booking required no later than 8pm.
- Only one adult per family for drop-offs and pick ups.

## SAFETY OF CHILDREN IN AN EMERGENCY

Please read the following carefully as it concerns your child's safety

**Safety Wristbands:** All children ages 2-12 years old, regardless of their participation in the Youth Program, must wear their Muster Station safety wristband at all times throughout the cruise. If a wristband is lost or damaged, replacements are available from the Front Desk

### CREW ALERT – CONTINUOUS RINGING OF THE SHIP'S ALARM

1. If you hear Crew Alert and your kids are in the Youth Center or at a youth activity, please proceed straight away to the Youth Center (Deck 17 AFT) and collect them.

If this signal is sounded while you are attending an organized youth event with your children, they will be handed back to your care.

At this stage there is nothing further required of you.

Teenagers ages 13+ will be sent back to their cabins if they are comfortable to leave. Otherwise, they will remain supervised in the Youth Center.

### GENERAL EMERGENCY ALARM – SEVEN OR MORE SHORT RINGS FOLLOWED BY ONE LONG RING ON THE ALARM BELLS OR SHIP'S WHISTLE

2. If you hear the General Emergency Alarm and you have not yet picked up your children, please proceed to your own Muster Station in the normal way where you will be reunited with your children at the Muster Station.

3. In the unlikely event that it is necessary to abandon ship and you have not already collected your children from the Youth Center, your children will be evacuated and looked after by the Youth Staff until you can be reunited.



## SPORTS TOURNAMENT

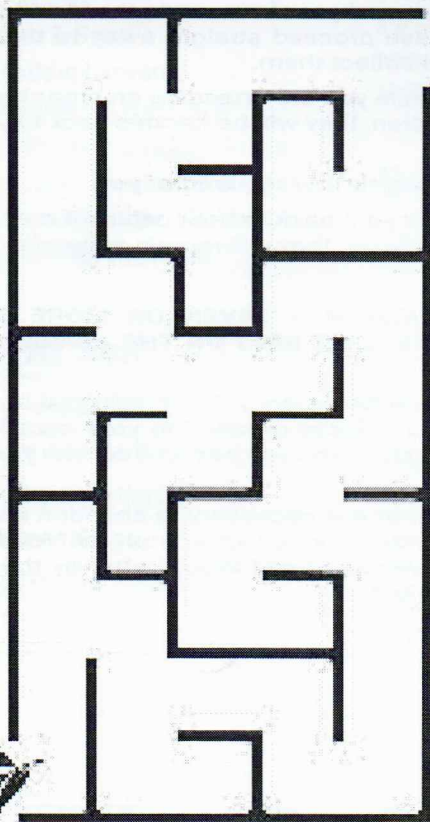
Sign up for  
Foosball, Air  
Hockey, and more!



## Card Games

UNO, SkipBo,  
Phase 10  
Blink, and more!

## HELP THE KOALA FIND HIS FOOD!



## TRIVIA CORNER

Did You KNOW? Did You KNOW? Did You KNOW?

A blue whale's heart can weigh up to 2000 pounds!



Cats can't taste anything that is sweet.



Did you know a grizzly bear can run as fast as a horse?



Owls can't move their eyeballs!



A pet hamster can run up to 8 miles a night on a wheel.



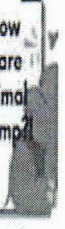
Did you know Sharks don't have bones?! Instead their skeletons are made of cartilage.



It's physically impossible for pigs to look up into the sky



Did you know Elephants are the only animal that can't jump!



A crocodile cannot stick its tongue out!



A prawn's heart is located at the bottom of its head!



Kangaroos can't walk backwards.



The colossal squid has the largest eyes in the world.

