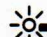


# P&O CRUISES GOODTIMES

 26°C, PARTLY CLOUDY + SHOWERS | TONIGHT'S DRESS CODE: ISLAND NIGHT | SUNRISE: 5.15AM | SUNSET: 6.42PM

## From the Bridge

Welcome to Noumea the capital city of New Caledonia, a territorial collectivity of France located 750 miles east of Australia in the southwest Pacific Ocean. Just over 7,100 square miles in size, New Caledonia has a population of approximately 256,000 individuals, a mix of Kanak people (the original inhabitants of New Caledonia), people of European descent, as well as those of Polynesian and Southeast Asian descent. We will be planning to depart from Noumea at 17:30 once you are all back on board and we will be sailing full away on passage by 19:30, we hope you all have a fantastic day ashore today!

**ARRIVAL TO NOUMEA: 8AM**

**DISEMBARKATION: 8.30AM**

**LAST SHUTTLE FROM THE PASSENGER**

**TERMINAL: 4.30PM**

## Going Ashore Today

### ON A P&O SHORE TOUR TODAY?

All Noumea tours meet in the Marquee Show Lounge on Deck 7 Forward, check your Digital Tour Ticket on the P&O App for your meeting time. No need to collect shuttle tickets we got you covered – just show up in The Marquee and get ready for your adventure. All tours will depart directly from the Ship.

### DON'T MISS THE BUS, SHIP TO SHORE Shuttle Tickets

Bonjour! Today's the day to explore. We are docking at the container port, which is a working area and we've got a complimentary shuttle ready to take you from the ship to the shore cruise terminal in the heart of the city.

- No walking through the port, safety first!
- The shuttle service runs continuously from 8.30PM, with the last bus back to the ship at 4.30PM. Don't miss the boat, quite literally!
- Need to disembark soon after arrival? If you haven't done so, reserve last-minute "digital shuttle tickets" till noon via the P&O App or manual tickets available from our fancy "Blue" Kiosks on Decks 5, 6 & 7 Midships. Quick, before the clock strikes twelve! Tickets are in place till demand has decreased. Tickets are not available at the Guest Services or Shore Tours desks.
- If you did not get one, just wait till the demand has decreased and no more tickets are required.
- Byron Beach Club (show Cruise Card) and P&O Shore Tour (show tour ticket) guests do not require a tender ticket.
- Return to the ship? No tickets this will be, First come, first served.
- Our shuttle's times are estimates but relax and wait on Deck 7 until your assigned meeting time, enjoy the comfort of the lounges, and embrace the anticipation. Multiple gangways today! listen for your group's name from deck 7, and let the adventure begin. Avoid Deck 5 Lobby, until your ticket number is called.
- Please have your Shuttle/digital ticket (take a "screenshot" for easy access) and cruise card available to show at the gangway.

### NOUMEA - NEW CALEDONIA TRAVEL ADVISORY

Swimming & water sports are only permitted at Baie des Citrons (Lemon Bay) and the beach in front of Château Royal Hotel as these two beaches are the only ones in Noumea with lifeguards and a shark net. The other beaches in Noumea are open for swimming and water sports, however, they do not have any shark nets, and swimmers will be responsible for their safety. These beaches include Magenta Beach, Baie de Sainte-Marie, Anse Vata (near the aquarium), Duck Island, and Master Island (Îlot Maitre). When in the water, look out and be cautious of box jellyfish.

## Quote of the Day

**"LAUGHTER IS TIMELESS,  
IMAGINATION HAS NO AGE  
AND DREAMS ARE FOREVER."**

- WALT DISNEY-

## Today's Must Do's

### 7PM & 9PM SIT DOWN COMEDY CLUB

**STARRING RO CAMPBELL (R18+)**

Black Circus Deck 7 Aft

Adult only performance. Some concepts and language may offend. Rated 18+ (Proof of age, ID may be required).

### 8PM DEAL OR NO DEAL\*

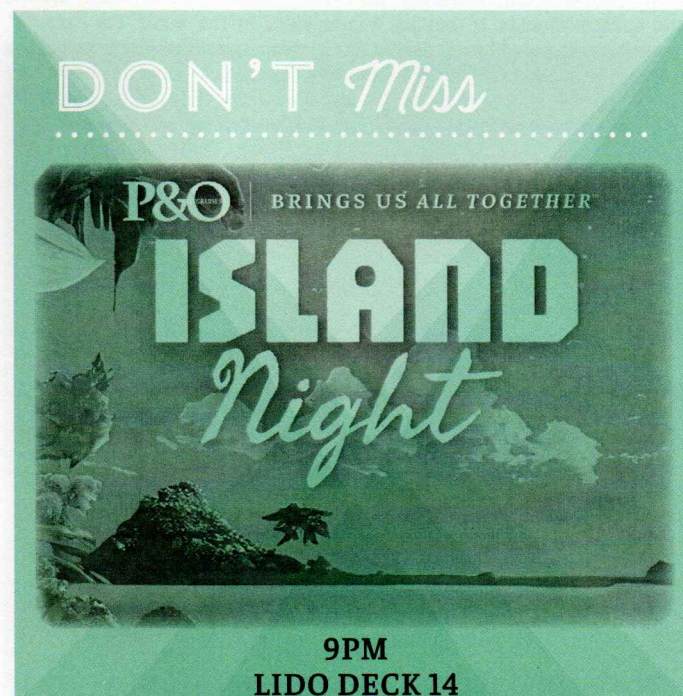
Marquee Deck 6 & 7 Forward

Deal or No Deal is a gameshow you can participate in by being selected as a contestant or playing along from your seat with a card! Purchasing a Deal or No Deal card gives you 2 chances to win up to \$5,000 or a free cruise! Card sales will end promptly at 7.50pm, please see the casino team outside of the Marquee Theatre at 6pm for your chance to win great prizes.

### 10.15PM LATE NIGHT KARAOKE

Encounter Hotel Deck 7 Midship

If you can sing, great. If you can't, even better.







7AM



12PM



3PM

## Ahoy cruiseling!

### Good to Know

#### MONEY MATTERS

In New Caledonia, the currency is Pacific Franc (XPF). You can use major credit cards like Visa, Mastercard, and American Express in Noumea's shops. While Amex cards are accepted, you can't use them to withdraw cash from ATMs. For cash, exchange currency at the Cruise Ship Terminal or withdraw from a local ATM near the terminal (Supermarket Auchan). Remember to provide a photocopy or your actual passport (phone screenshot IS NO LONGER ACCEPTED) for cash currency exchange. XPF can also be used in Lifou and you can exchange any unused notes onboard.

#### FANCY A DRINK

In accordance with our Responsible Service of Alcohol policy, alcohol will not be served to persons who are behaving in a disorderly manner; guests under 18 years of age will not be served or supplied alcohol nor are they to consume alcohol. Photo identification may be requested. Any alcohol purchased ashore will be confiscated and you will be able to pick it up on the morning of your disembarkation day. In addition, the following restrictions apply to non-alcoholic beverages being brought onboard: Plastic or glass-bottled soft drinks (including water) and slab packs of canned soft drinks are not permitted to be brought onboard. Each guest can bring onboard a maximum of 12 cans of soft drink loosely packed. Never accept drinks from strangers and never leave your drink unattended.

#### MEDICAL SERVICES

##### DECK 4 MIDSHIP

The Medical Center is available by scheduling an appointment.

Please call **4426** to make your appointment.

**FOR MEDICAL EMERGENCIES, PLEASE CALL 000.**

#### CREW SAFETY DRILL

At 9.30AM today, alarm bells will be sounded as our crew is exercised in their emergency duties. During this exercise you may hear various alarms and announcements. If they are accompanied by the words 'For Exercise', no action is required by our Guests. We kindly request that passengers keep clear of the outside area of the Promenade Deck (Deck 7) and any other area where the crew may be working. We also advise that only limited passenger services will be available for the duration of the exercise.

#### AIRPORT AND ROMA STREET RAILWAY STATION TRANSFERS

##### P&O App or Destinations Lounge Deck 5 Forward

Transfers to the airport (for domestic flights after 10AM and international flights after 12noon) are priced at \$25 per person, while transfers to Roma Street Station cost \$29 per person. Space is limited and subject to availability, and please note that these transfers are non-refundable within 48 hours of our scheduled arrival to Brisbane. Unfortunately, buses are not wheelchair accessible. Please book by 11AM, January 4th, 2025 (NOUMEA).

**All outdoor activities are weather permitting.\*Fees apply**

7

AM

**7AM MORNING STRETCH**  
F45 Studio Deck 15 Forward  
**7.30AM ABS CLASS**  
F45 Studio Deck 15 Forward

8

AM

**8.15AM F45 CLASS\***  
F45 Studio Deck 15 Forward

9

AM

**9AM WALK A MILE WITH YOUR SPORTS MANAGER MASI**  
Deck 15, Meet By The Big Screen  
**9AM EARLY BIRD TRIVIA**  
Encounter Hotel Deck 7 Midship

11

AM

**11AM MORNING MOVIE: OZI: VOICE OF THE FOREST (PG)**  
Big Screen Deck 15  
**11.30AM DANCE FIT WITH MEAGAN**  
Encounter Hotel Deck 7 Midship

12

PM

**12PM SPEED SUDOKU CHALLENGE**  
Encounter Hotel Deck 7 Midship  
**12.15PM WORD GAMES AVAILABLE**  
Encounter Hotel Deck 7 Midship  
**12.30PM - 6PM TWIN RACE WATER SLIDES**  
DECK 16 MIDSHIP  
*\*Subject to closure due to adverse weather conditions.*

1

PM

**1PM TABOO**  
Encounter Hotel Deck 7 Midship  
**1PM JUST BROW-ZING & LASH LOVE**  
Elemis at Sea Deck 15 Forward  
Discover our lash & brow wow with our glamour eyes workshop!  
**1PM AFTERNOON MOVIE: THE KID WHO WOULD BE KING (PG)**  
Marquee Deck 6 & 7 Forward

2

PM

**2PM FIRST AND LAST TRIVIA**  
Encounter Hotel Deck 7 Midship  
**2PM SKINCARE SPECIALTIES - BANISH PUFFY EYES**  
Elemis at Sea Deck 15 Forward  
Enjoy a FREE eye treatment targeting dark circles, puffiness, and crow's feet.  
**2PM AFTERNOON MOVIE: RON'S GONE WRONG (PG)**  
Big Screen Deck 15  
**2.45PM TEST YOUR COUNTRY KNOWLEDGE**  
Encounter Hotel Deck 7 Midship

3

P

**3PM WELLBEING SERIES - RELIEVING ARTHRITIS**  
Elemis at Sea Deck 15 Forward  
Discover effective relief through Chinese herbs and acupuncture.  
**3PM - 5PM BLACK CIRCUS BOX OFFICE TICKETS AVAILABLE\***  
Box Office Deck 7 Forward *\*Fee Applies*  
**3.15PM SPORTS: ADULTS SHUFFLEBOARD TOURNAMENT**  
Deck 16 Aft Starboard Side  
**3.30PM LATIN FUSION WITH GINA**  
Encounter Hotel Deck 7 Midship

4

PM

**4PM WELLBEING SERIES - BURN FAT FASTER**  
Elemis at Sea Deck 15 Forward  
Work smarter not harder all while boosting energy and shedding fat.  
**4.15PM GUESS THE TUNE - ISLAND HOLIDAY**  
Encounter Hotel Deck 7 Midship  
**4.15PM SPORTS: ADULTS LAWN BOWLS TOURNAMENT**  
Deck 16 Aft Portside  
**4.30PM SAILAWAY MUSIC WITH RNZ DUO**  
Oasis Deck 14 Aft  
**4.45PM - 6.15PM POOLSIDE MIXTUNES WITH DJ MADZ**  
Lido Pool Deck 14

5

PM

**5PM P&O EDGE WALK THE PLANK\***  
Deck 16 Midship *(Prebooking Encouraged)*  
"Experience the ultimate adrenaline rush as you take each step closer to the edge". Activities are subject to availability.  
**5PM SPORTS: ADULTS MEGA DECK QUILTS CHALLENGE**  
Deck 15 Midship Magrodome  
**5.15PM ISLAND DANCE CLASS WITH THE ENTERTAINMENT TEAM**  
Encounter Hotel Deck 7 Midship  
**5.45PM JAZZY VIBE WITH PACIFIC SHOWBAND**  
Blue Room Deck 7 Aft





6PM



9PM



11PM

# NIGHT life

6

PM

**6PM GUIDED MEDITATION**

F45 Studio Deck 15 Forward

**6.15PM LIVE MUSIC WITH KIKI Q**

The Lobby Deck 5 Midship

**6.15PM LIVE MUSIC WITH MASAKEE DUO**

Encounter Hotel Deck 7 Midship

**6.30PM INCH OF GOLD STYLING EVENT**

ATRIUM, DECK 6

Personalise your bracelet here and now!

**6.30PM - 8PM BLACK CIRCUS BOX OFFICE TICKETS****AVAILABLE\***

Box Office Deck 7 Forward \*Fee applies

7

PM

**7PM SIT DOWN COMEDY CLUB STARRING RO CAMPBELL (R18+)**

Black Circus Deck 7 Aft

Adult only performance. Some concepts and language may offend.

Rated 18+ (Proof of age, ID may be required).

**7PM KALLATI JEWELLERY AUCTION PREVIEW**

Jewellery Boutique, Deck 7

Register and view our collection over a glass of bubbles

**7PM COMPLIMENTARY SCALP MASSAGES**

Elemis at Sea Deck 15 Forward

Relax and enjoy your scalp ritual with our hair team.

8

PM

**8PM DEAL OR NO DEAL\***

Marquee Deck 6 &amp; 7 Forward

Deal or No Deal is a gameshow you can participate in by being selected as a contestant or playing along from your seat with a card! Purchasing a Deal or No Deal card gives you 2 chances to win up to \$5,000 or a free cruise! Card sales will end promptly at 7.50pm, please see the casino team outside of the Marquee Theatre at 6pm for your chance to win great prizes.

**8PM SCOTCH & WATCH EVENT**

Clifton Watch Store, Deck 7

Discover more about fine Whiskey &amp; Swiss watches

**8.15PM PUB STYLE GAMESHOW**

Encounter Hotel Deck 7 Midship

**8.30PM LIVE MUSIC WITH KIKI Q**

The Lobby Deck 5 Midship

**8.45PM LIVE MUSIC WITH SOUL PEPPERS**

Blue Room Deck 7 Aft

9

PM

**9PM SIT DOWN COMEDY CLUB STARRING RO CAMPBELL (R18+)**

Black Circus Deck 7 Aft

Adult only performance. Some concepts and language may offend.

Rated 18+ (Proof of age, ID may be required).

**9PM TEXAS HOLD'EM POKER CASH GAME**

Casino Deck 6 Forward

\$1/\$2 no-limit cash game. Available while the Casino is open.

**9PM ISLAND NIGHT PARTY**

Lido Deck 14

Get ready for an unforgettable evening of island-inspired entertainment at P&O Island Night! Think specially crafted cocktails, tropical flavours, and dreamy island tunes. There will be plenty of fun and games hosted by our entertainment staff and Cruise Director Michelle, plus Glam and DJ Madz so you can dance the night away.

**9.15PM LIVE MUSIC WITH MASAKEE DUO**

Encounter Hotel Deck 7 Midship

10

PM

**10PM LATE NIGHT MOVIE: KANDAHAR (MA15+)**

Marquee Deck 6 &amp; 7 Forward

**10.15PM LATE NIGHT KARAOKE**

Encounter Hotel Deck 7 Midship

If you can sing, great. If you can't, even better.

**10.30PM DAILY CASINO ROLLOVER RAFFLE**

Casino Deck 6 Forward

Play in the Casino to earn electronic tickets for the draw. Must be present to win.

11

PM

**11.15PM ISLAND NIGHT AFTER PARTY WITH DJ MADZ (R18+)**

Altitude Deck 18 Aft (Photo ID may be required)

12

AM

**12AM - ONWARDS 24 HOURS STAY AND PLAY**

Casino Deck 6 Forward

Our pokies remain open overnight.

## The MARQUEE

# DEAL OR NO DEAL

8PM

MARQUEE DECK 6 &amp; 7 FORWARD

## GIG Guide

- **Sailaway Music with Rnz Duo**  
4.30PM - 7.15PM | Oasis Deck 14 Aft
- **Jazzy Vibe with Pacific Showband**  
5.45PM - 8.30PM | Blue Room Deck 7 Aft
- **Live Music with Kiki Q**  
6.15PM - 8PM | The Lobby Deck 5 Midship
- **Live Music with Masakee Duo**  
6.15PM - 8PM | Encounter Hotel Deck 7 Midship
- **Live Music with Kiki Q**  
8.30PM - 10.15PM | The Lobby Deck 5 Midship
- **Live Music with Soul Peppers**  
8.45PM - 11.30PM | Blue Room Deck 7 Aft
- **Live Music with Masakee Duo**  
9.15PM - 10PM | Encounter Hotel Deck 7 Midship



## THE Spa

**Elemis At Sea Deck 15 Forward**  
**8AM - 10PM, Call 15222 for your Appointment**

### Aromaspa Seaweed Massage

Do you suffer from poor circulation, low energy, fluid retention or arthritis? Indulge in an Aromaspa Seaweed wrap with massage! Book today and receive 100 minutes for the price of 75 minutes.

### The Barber Shop is Open!

Need a haircut and style, beard trim or tidy-up, manicure and pedicure? All mens barbering services are 20% off TODAY ONLY!

## TAX & Duty Free

**Tax & Duty Free Shops Deck 5, 6 & 7 | 6PM - 10PM**

### 7PM KALLATI JEWELLERY AUCTION PREVIEW

Jewellery Boutique, Deck 7  
 Register and view our collection over a glass of bubbles.

### 8PM COLOURED DIAMONDS TALK

Jewellery Boutique, Deck 7  
 Learn about these rare, beautiful gemstones.

## THE Casino

### Casino Deck 6 Forward

Casino opens approx. 30mins after sailing for all your classic games, pokies & more!

### Deal Or No Deal Cards Sales

Deal or No Deal is a gameshow you can participate in by being selected as a contestant or playing along from your seat with a card! Purchasing a Deal or No Deal card gives you 2 chances to win up to \$5,000 or a free cruise. Purchase your cards today at the Casino Cash Desk! Free-to-watch or pay-to-play.

### 10.30PM Daily Casino Rollover Raffle

Play in the Casino to earn electronic tickets for the draw. Must be present to win.

## PHOTO Deals

**imagestudio Gallery Deck 7 Aft: 5PM - 10PM**

**Casual Photo Studios - Lobby Deck 7: 6PM - 9.30PM**

### Life Photography

Book your personal CRUISE LIFE and LIFE STUDIO experience! All packages are tailor made with savings of up to 50% Off compared to onshore studios.\* Limited reservations available. Visit the Imagestudio to reserve your spot.

### Getting ready for the Evening!

Visit our Portrait Studios to have your picture shot. Our skilled photographers are ready to document the moments during your cruise.

## FOOD & Beverage

### CHEF'S TABLE AT WATERFRONT\*

This exclusive dining experience not only promises a delightful culinary journey but also an opportunity to create lasting memories with friends and loved ones. A five course meticulously crafted dishes, complemented by expertly selected wines, enhancing your dining experience to new heights. Capture the essence of the evening with a group photograph, preserving the joyous moments shared. A private gallery tour offers a behind-the-scenes look at the chefs' artistry and dedication, while the signed menu serves as a cherished keepsake. This experience ensures your evening is both indulgent and unforgettable. \*Charges Apply

To make a reservation, you can either visit the booking desk at the Dragon Lady Restaurant, call extension 4800 between 8AM and 4PM, or use the P&O Cruises app.

## THE Edge

**Deck 16, Midship (Under the Waterslides)**  
**2PM - 7PM**

We have a range of activities to suit everyone. Whether it's zipping down the Flying Fox, reaching the top of the Cargo Net or even Walking the Plank, there is an adventure to suit everyone!

Visit today and receive 20% off all individual activities. Purchase an Edge merchandise 50% off! See all our selection on Deck 16 Midship at the Edge Shop! Activities are not limited to advertisements. Please see the edge team for full listings.

## DINING Times \*Charges Apply

### PANTRY DECK 14 AFT

Breakfast - 6.30AM - 10AM  
 Lunch - 11.30AM - 3PM  
 Kettle & Bun - 11.30AM - 4PM  
 Kids Dinner - 4.30PM - 5.15PM  
 Dinner - 5.30PM - 9PM

### WATERFRONT DECK 5 MIDSHIP

Breakfast - 7AM - 9AM  
 Dinner - 5PM - 9PM  
 (Reservation Recommended)

### DRAGON LADY, DECK 6 AFT

Dinner - 5PM - 9PM  
 (Reservation Recommended)

### ANGELO'S, DECK 6 MIDSHIP

Dinner - 5PM - 9PM  
 (Reservation Recommended)

### P&O PIZZERIA DECK 14 FORWARD \*

12PM till late (Takeaway available)

### P&O TRATTORIA DECK 7 MIDSHIP \*

Dinner - 5.30PM - 9PM  
 (Reservation Recommended)

### LUKE'S BAR & GRILL DECK 7 FORWARD \*

Dinner - 5.30PM - 9PM  
 (Reservations Recommended)

### LUKE'S BURGER BAR DECK 14 FORWARD \*

12PM till Late (Takeaway available)

Reservations for all restaurants are accepted from 8am to 4pm at the Dragon Lady restaurant Deck 6 aft. P&O Apps reservation or by dialling the number **4800**.

## Shore Tours

**Destination Desk Deck 5 Forward**

**Open: 5PM - 6PM**

**or the P&O Cruise App 24/7!**

Please check your Digital Tour Tickets on the P&O App for your tour meeting time today. (Helpful hint - screenshot them on your phone for easy access).

All tours today will meet in the Marquee Show Lounge on Deck 7 Forward and you are not required to collect a shuttle ticket.

*\*Terms and Conditions Apply!*